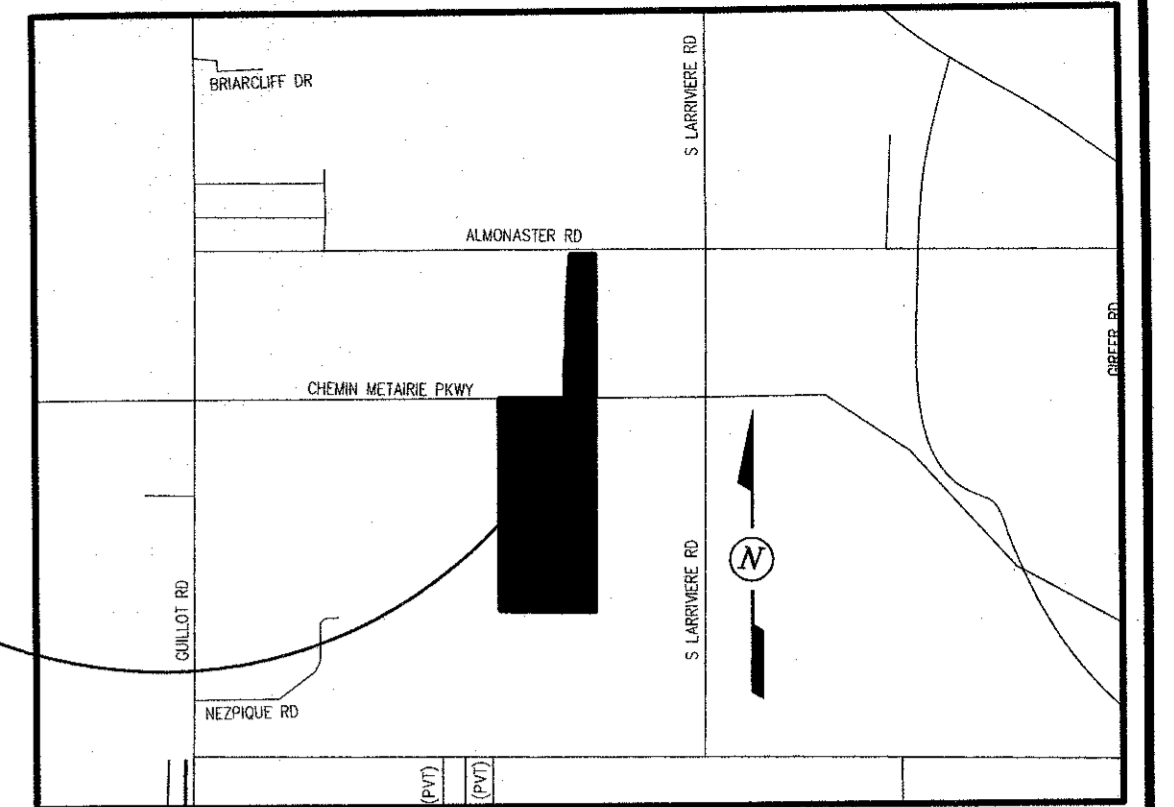
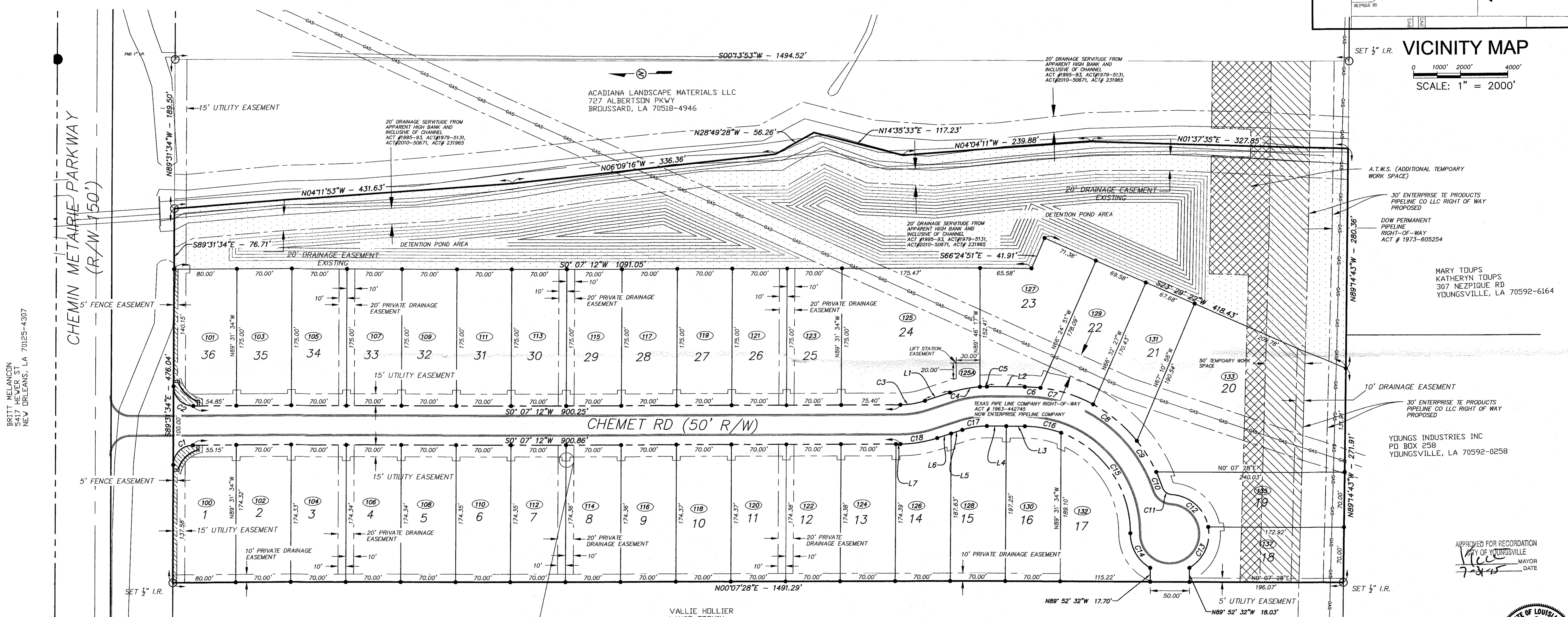


LOCATION OF PROPERTY



SCALE: 1" = 2000'



BRITT MELANCON
5417 HEWER ST
NEW ORLEANS, LA 70125-4307

MARY TOUPS
KATHERYN TOUPS
307 NEZEPQUE RD
YOUNGVILLE, LA 70592-6164

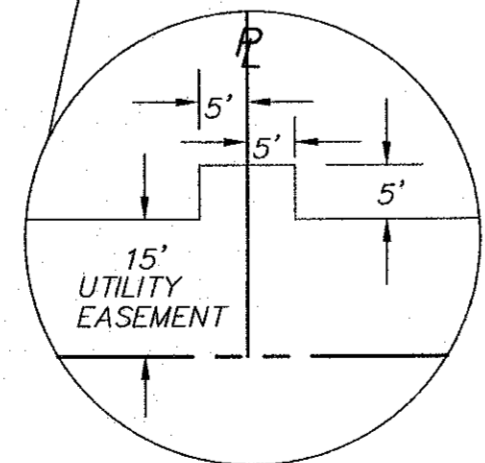
YOUNGS INDUSTRIES INC
PO BOX 258
YOUNGVILLE, LA 70592-0258

VALLIE HOLLIER
LANCE FREMIN
405 HUNTLEY AVE
LAFYETTE, LA 70508-4047

APPROVED FOR RECORDATION
CITY OF YOUNGVILLE
MAYOR
DATE

Curve #	Length	Radius	Delta	Chord Direction	Chord Length
C1	39.12	25.00	89.65	N44° 42' 11"W	35.25
C2	39.42	25.00	90.35	N45° 17' 49"E	35.46
C3	31.63	100.00	18.12	N8° 56' 24"W	31.49
C4	38.59	150.00	14.74	N10° 37' 47"W	38.49
C5	8.85	150.00	3.38	N1° 34' 11"W	8.85
C6	19.91	207.61	5.50	N3° 12' 15"E	19.91
C7	70.84	179.57	22.60	N17° 15' 16"E	70.39
C8	73.11	190.59	21.98	N39° 32' 48"E	72.66
C9	46.51	176.79	15.07	N58° 04' 22"E	46.37
C10	21.16	206.13	5.88	N68° 32' 59"E	21.15
C11	16.14	13.62	67.90	N37° 32' 25"E	15.21
C13	87.58	49.76	100.85	S49° 57' 52"E	76.70
C15	165.67	135.00	70.31	S55° 18' 12"W	155.47
C16	47.19	135.00	20.03	S10° 07' 59"W	46.95
C17	31.63	100.00	18.12	S8° 56' 24"E	31.49
C18	47.44	150.00	18.12	S8° 56' 24"E	47.24

Line #	Length	Direction
L1	33.61	N18° 00' 00"W
L2	48.45	N0° 07' 12"E
L3	48.45	N0° 07' 12"E
L4	48.45	N0° 07' 12"E
L5	33.61	N18° 00' 00"W
L6	33.61	N18° 00' 00"W
L7	5.71	S0° 07' 12"W



TYPICAL UTILITY NICHE AT 15' EASEMENT (NOT TO SCALE)

FLOOD NOTES

THIS PROPERTY LIES WITHIN ZONE X (AREAS OUTSIDE 500 YEAR FLOOD PLAIN) AS SHOWN ON THE FLOOD INSURANCE RATE MAP FOR LAFAYETTE PARISH, LOUISIANA, (UNINCORPORATED AREAS) MAP NUMBER 22055C0080G, EFFECTIVE DATE JANUARY 19, 1996. **A NEW REVISED PRELIMINARY FIRM NO. 22055C0275J DATED DECEMBER 19, 2014 SHOWS THE REVISED FLOOD ZONE TO BE ZONE X.

GENERAL NOTES

TOTAL NUMBER OF LOTS 36
 AREA OF LOTS 11.61 ACRES
 AREA OF RIGHT OF WAY 1.69 ACRES
 AVERAGE LOT SIZE 14,048 SQ FT
 MINIMUM LOT FRONTAGE 46.3 FT (LOT 22)
 MINIMUM LOT SQUARE FOOTAGE 11,994 SQ FT (LOT 22)
 COMMON AREA 4.89 ACRES
 TOTAL AREA OF DEVELOPMENT 18.19 ACRES

TYPES OF IMPROVEMENTS

STREETS: 27" CURB AND GUTTER ASPHALT
 SEWER: CITY OF YOUNGVILLE
 WATER: CITY OF YOUNGVILLE
 ELECTRIC: S.L.E.M.C.O.
 TELEPHONE: AT & T
 CABLE T.V.: COX
 GAS: NOT AVAILABLE
 SIDEWALK: ALONG ALL PUBLIC STREETS

LEGEND

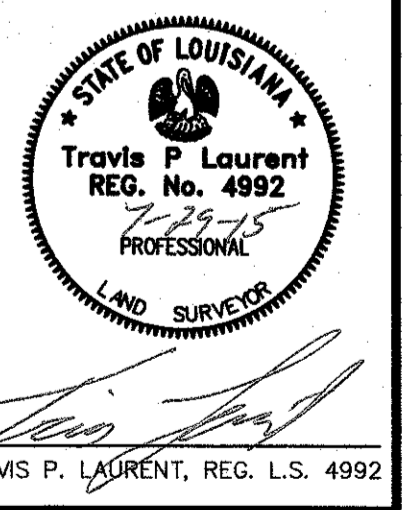
- STREET R/W
- EASEMENT
- LIMITS OF DEVELOPMENT
- MUNICIPAL NUMBER
- SET PROPERTY CORNER
- FOUND PROPERTY CORNER
- COMMON AREA
- FENCE EASEMENT

SETBACK NOTES

FRONT SETBACK 20'
 REAR SETBACK 10'
 SIDE SETBACK 5' OR EASEMENT LINE

DEVELOPER
 CHEMET PARK, LLC
 C/O CLIFTON D. GUIDRY
 1318 CAMELLIA BLVD.
 LAFAYETTE, LA 70508
 1.337.962.3274 (DIRECT)

LAFAYETTE PARISH CLERK OF COURT
 FILE #: 2015-00029704
 RECORDED DATE: 7/31/2015
 INDEX TYPE: CONVEYANCES
 TYPE OF DOCUMENT: DEDICATION
 RECORDING PAGES: 4



FINAL PLAT
 CHEMET PARK, LLC

"A RESIDENTIAL DEVELOPMENT"
 LOCATED IN SECTION 17, T11S, R5E,
 CITY OF YOUNGVILLE, LOUISIANA

DATE OF PLAT:
 JULY 29, 2015

SCALE: 1" = 60'

PM PAUL L. MIERS ENGINEERING, LLC
 CIVIL ENGINEERS LAND SURVEYORS
 104 WESTMARK BLVD, SUITE 2A LAFAYETTE, LOUISIANA 70506
 PHONE (337) 981-7792 FAX(337) 981-7797

BPN 4110
 SPN 01
 FILE D
 DWG